

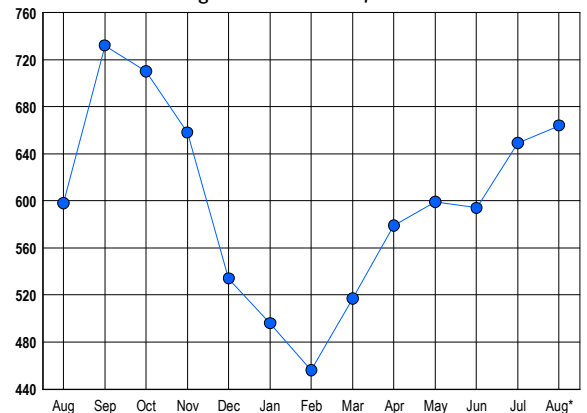


LISTINGS

Prices Range	New This Month			Total Actives		
	2014	2013	% Change	2014	2013	% Change
0 - 149,999	13	14	-7.1	18	13	38.5
150,000 - 199,999	20	19	5.3	26	46	-43.5
200,000 - 299,999	57	54	5.6	69	77	-10.4
300,000 - 399,999	64	56	14.3	64	44	45.5
400,000 - 499,999	49	47	4.3	72	60	20.0
500,000 - 599,999	39	43	-9.3	77	61	26.2
600,000 - 699,999	46	38	21.1	71	42	69.0
700,000 - 799,999	32	40	-20.0	43	38	13.2
800,000 - 899,999	22	17	29.4	30	30	0.0
900,000 - 999,999	13	13	0.0	22	25	-12.0
1,000,000 - 1,249,999	12	13	-7.7	26	19	36.8
1,250,000 - 1,499,999	11	15	-26.7	26	33	-21.2
1,500,000 +	13	8	62.5	120	110	9.1
TOTALS	391	377	3.7	664	598	11.0

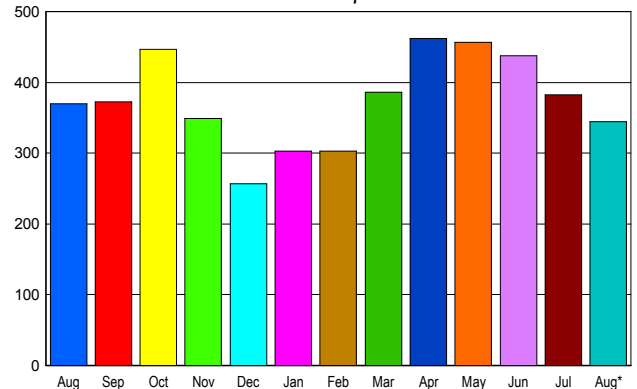
INVENTORY TREND

Listings Active at End of Month



SALES TREND

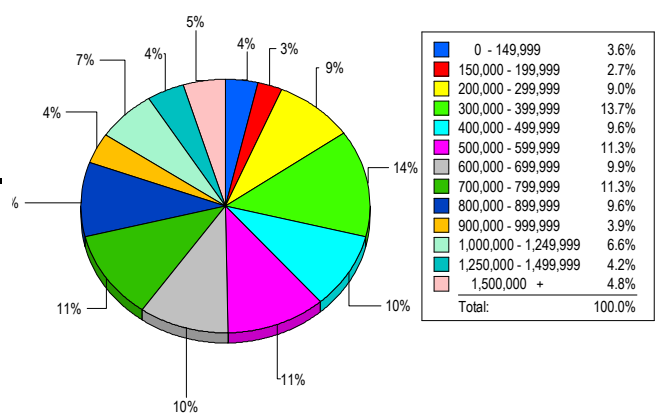
Contracts Ratified Per Month



CONTRACTS

Price Range	New This Month			Year-To-Date		
	2014	2013	% Change	2014	2013	% Change
0 - 149,999	13	23	-43.5	119	147	-19.0
150,000 - 199,999	15	20	-25.0	92	129	-28.7
200,000 - 299,999	42	43	-2.3	253	290	-12.8
300,000 - 399,999	68	60	13.3	354	310	14.2
400,000 - 499,999	45	35	28.6	334	347	-3.7
500,000 - 599,999	25	32	-21.9	321	313	2.6
600,000 - 699,999	33	37	-10.8	319	330	-3.3
700,000 - 799,999	36	37	-2.7	283	263	7.6
800,000 - 899,999	15	21	-28.6	219	209	4.8
900,000 - 999,999	12	14	-14.3	116	132	-12.1
1,000,000 - 1,249,999	15	17	-11.8	170	141	20.6
1,250,000 - 1,499,999	13	16	-18.8	130	153	-15.0
1,500,000 +	13	15	-13.3	200	199	0.5
TOTALS	345	370	-6.8	2910	2963	-1.8

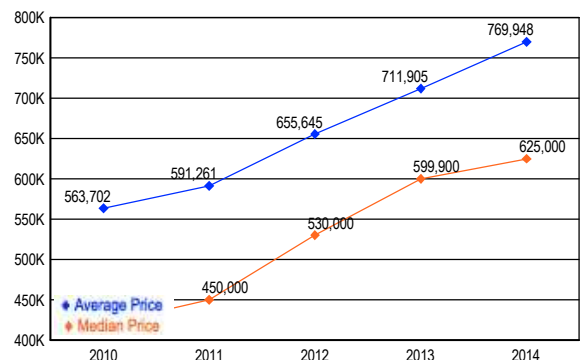
MARKET BY PRICE RANGE



SETTLEMENTS

Price Range	New This Month			Year-to-Date		
	2014	2013	% Change	2014	2013	% Change
0 - 149,999	12	13	-7.7	112	129	-13.2
150,000 - 199,999	9	15	-40.0	71	100	-29.0
200,000 - 299,999	30	34	-11.8	213	287	-25.8
300,000 - 399,999	46	37	24.3	296	277	6.9
400,000 - 499,999	32	42	-23.8	273	291	-6.2
500,000 - 599,999	38	32	18.8	312	286	9.1
600,000 - 699,999	33	41	-19.5	293	310	-5.5
700,000 - 799,999	38	30	26.7	263	232	13.4
800,000 - 899,999	32	27	18.5	211	193	9.3
900,000 - 999,999	13	16	-18.8	146	149	-2.0
1,000,000 - 1,249,999	22	24	-8.3	185	167	10.8
1,250,000 - 1,499,999	14	12	16.7	124	148	-16.2
1,500,000 +	16	27	-40.7	212	180	17.8
TOTALS	335	350	-4.3	2711	2749	-1.4

AVERAGE & MEDIAN PRICE



DATA SOURCE: Metropolitan Regional Information Systems, Inc. (MRIS)

NOTES: Properties not listed through this Multiple Listing Service are not reflected. The term "sales" represents ratified purchase contracts. Current year information is preliminary and subject to revision. Current year-to-date contract information may not equal the sum of the monthly contract totals reported in